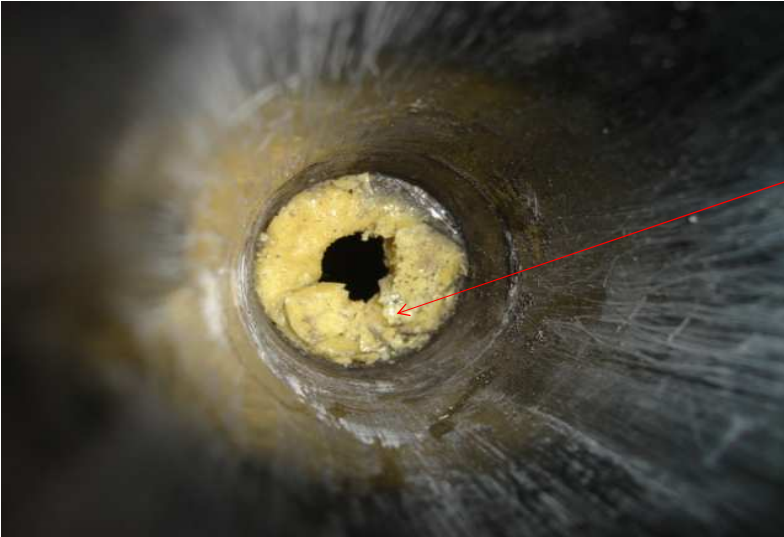


This mast stump socket shows the problem.

The Carbon disc should be glued into the tube, support on the small lip as seen here.

In this boat the disc was not properly glued and had been pushed down past the lip.



The disc was removed, revealing a large section of glue that should have been bonding the disc to the wall of the tube.



You can see that the tube was cleaned up and a new section glued in at the correct height.

There should be no excess glue inside the mast socket.